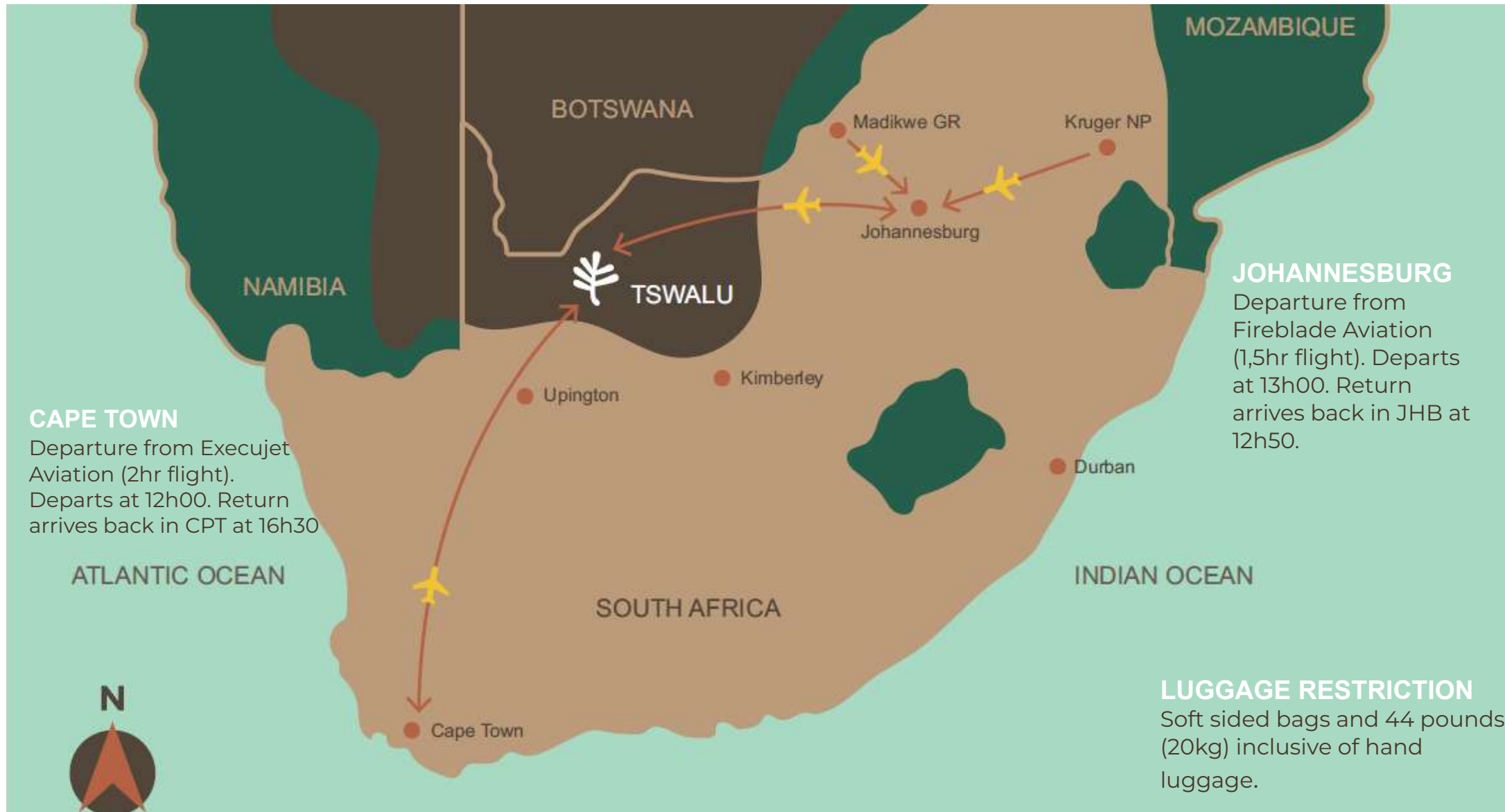




TSWALU







## WHY ARE WE HERE?

Our purpose is to restore, conserve and enhance the ecology of Tswalu while preserving and promoting the cultural and historical heritage in a sustainable and environmentally responsible manner, which is closely aligned to The Long Run's 4Cs scientific, sustainable measurables

The 4C framework (a balance of Conservation, Community, Culture and Commerce) helps us embed sustainable and regenerative practices in operations and decision-making. Just like in nature, a balance is essential to keep each component healthy.

**BUT, TO UNDERSTAND WHO WE ARE AND WHAT WE DO, WE NEED TO APPRECIATE TSWALU'S LIVING HERITAGE .....**



TOGETHER, WE ACKNOWLEDGE OUR SHARED, LIVING HERITAGE AND RESPONSIBILITY TOWARDS CONSERVING ONE OF SOUTHERN AFRICA'S MOST ENIGMATIC WILDERNESS AREAS FOR FUTURE GENERATIONS.





## AN IMMERSIVE SAFARI

Tswalu has always been a year-round destination, each season offering unique and memorable sightings along with the freedom to explore the reserve's vast reaches in complete privacy and at your own pace.

With your private vehicle, guide and tracker at the ready, taking a deep dive into this semi-arid wonderland of dramatic contrasts and amazing biodiversity is an adventure that should never be rushed.





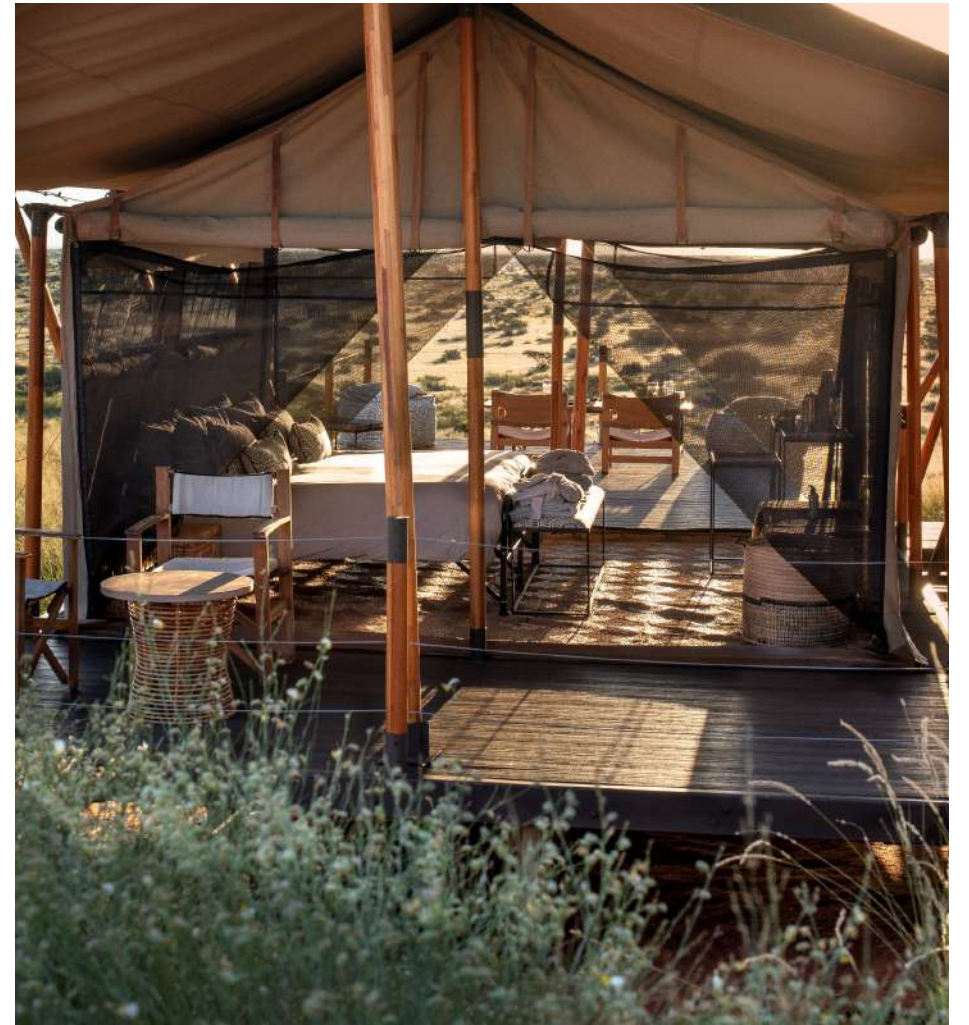


# SUNRISE AND SUNSET HORSE RIDES ARE MAGNIFICENT



























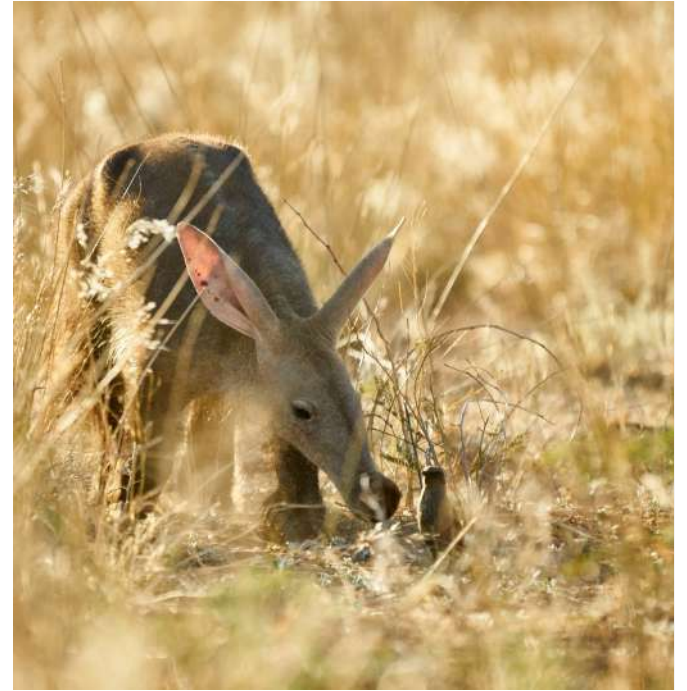






Other than the typical species one would see in Africa, this arid savanna is home to the rare and unusual – indigenous to the southern Kalahari.

A private vehicle means unlimited time at sightings, which include some of the elusive species that find sanctuary at Tswalu, such as aardvark, pangolin, bat-eared fox, brown hyena, and aardwolf.





## A CONSERVATION WORK IN PROGRESS

Tswalu Kalahari Reserve is primarily a conservation area. For the past 28 years it has aimed to restore an area of over 1000 square kilometres (300 000 acres) of Kalahari savannah. It has developed into a vast area of unique biodiversity and natural beauty which offers safe haven to a number of rare and endangered species. The restoration of the natural environment to a pristine condition, the re-establishment and protection of biological diversity and the maintenance of the natural ecological



The Tswalu Foundation facilitates environmental research at Tswalu Kalahari. The research is primarily guided by the three core themes of the Tswalu Foundation – namely Conservation Biology, Climate Change and Anthropogenic Factors.



The benefits of targeted research extend beyond Tswalu, adding to a collective knowledge base that has already assisted conservationists in wilderness areas in other parts of Africa as well as those working in academic fields.





Wildlife conservation management is important for the management of wild-animal populations as well as the land supporting them to ensure productivity and that ecological balance is maintained. At Tswalu, we believe that as part of a healthy ecosystem, all wildlife, at various trophic levels is needed to provide balance and stability to nature's processes. Our goal is to ensure the continued survival of these species, and to educate people on the importance of sustainability. Wildlife conservation management on Tswalu is an important activity guiding interactions among and between wildlife and their environment to achieve a balanced and healthy ecosystem. Through this process, we aim to halt significant imbalances in populations, which may negatively impact biodiversity and contribute to habitat degradation on the property.

DR DUNCAN MACFADYEN





## OUR EXTENDED FAMILY

The Tswalu community consists of staff members and their families, researchers, visiting doctors that support the healthcare centre, visiting artists in residence, every single valued guest, the wider community of neighbours and conservationists, suppliers, and everyone who is invested in our purpose.







## CULTURAL HERITAGE

San engraving sites at Tswalu indicate the importance of the green Kalahari to its earliest inhabitants. It gave them sanctuary and both physical and spiritual nourishment.

There are important archaeological sites ranging from the Middle Stone Age (50 000 – 280 000 years ago) to the Late Stone Age (10 000 years ago).

These sites are protected and being researched.

This ancient culture is the inspiration behind our brand and logo design - the petroglyph symbol.

## SHARING CULTURE WITH OUR GUESTS

- Art
- Food
- History
- Performance
- Crafts

Anything that tells us and our guests we are in the unique green Kalahari!





EVERY MOMENT OF EVERY MEAL AT TSWALU REFLECTS THE CULINARY HERITAGE OF SOUTH AFRICA

Says executive chef Marnus Scholly....

“We are focusing on a specific area of produce, working closely with local farmers, and we understand the unique challenges of the Kalahari region. Our offerings are tailored to guest needs and deliver a world class experience.”

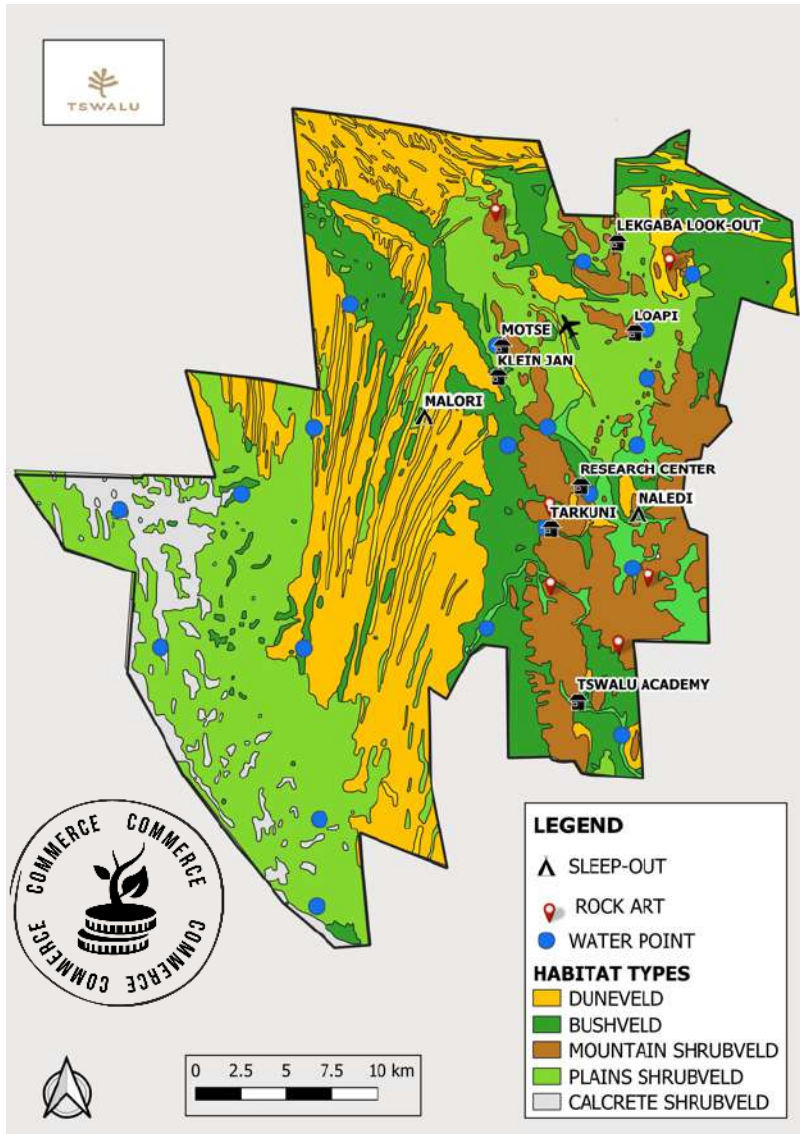








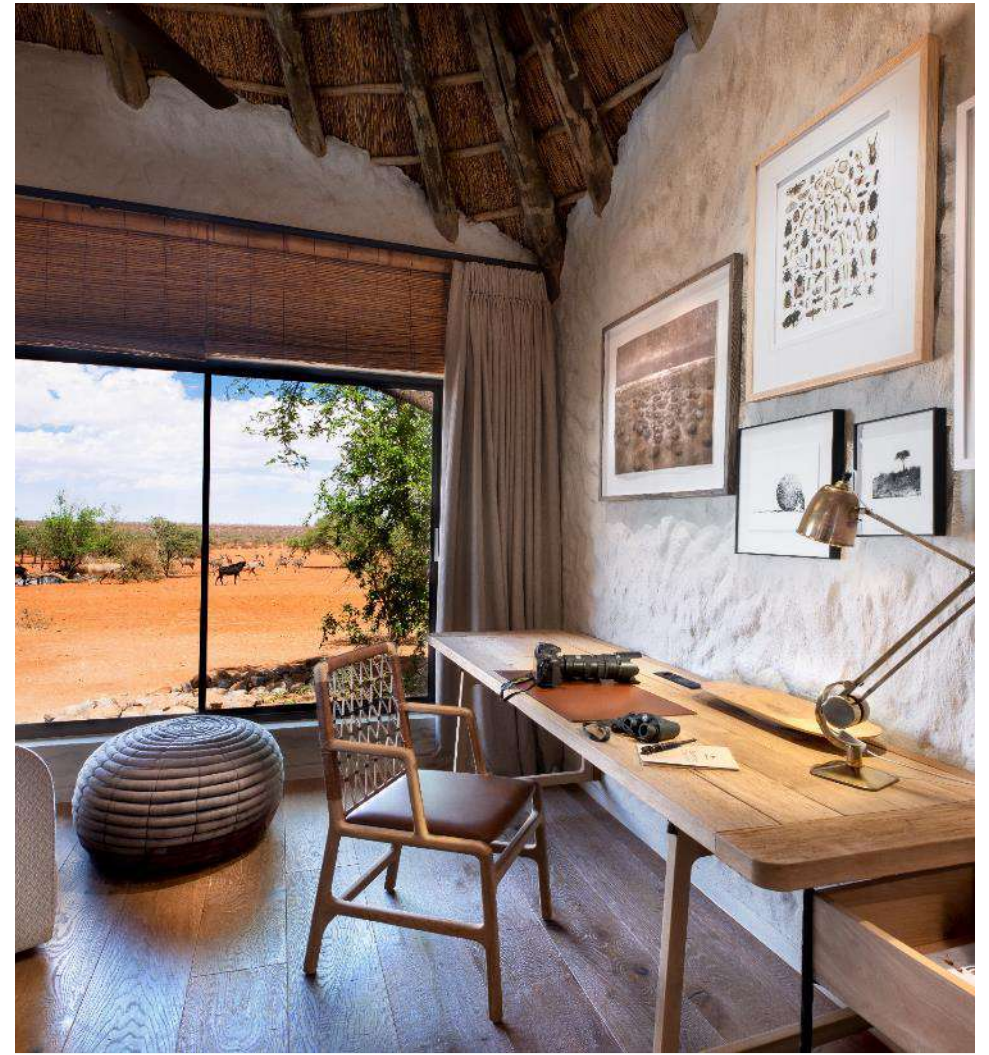
# OUR CAMPS: MOTSE, TARKUNI AND LOAPI

















# TSWALU KALAHARI

A NEW BEGINNING – LOAPI LUXURY TENTED SAFARI CAMP



TSWALU







## LOAPI

With at least 100 metres (330 feet) between each residence, guests are assured of solitude and seclusion with a dedicated *Homathi* (butler) and chef to take care of everything. In Setswana, Loapi means 'the space below the clouds', aptly reflected in the camps environmentally sensitive, modular design, combining canvas, glass and steel. Uncluttered, sculptural interiors, enriched by nature's colours, forms and shapes, optimise the sense of space and evoke the carefree, nomadic spirit of camping.





## DESIGN PHILOSOPHY

The overarching design philosophy was that the new camp be designed to be as low impact as possible, to demonstrate Tswalu's ongoing commitment to sustainably safeguard their unique environment.

To this end, the focus was on providing a modular, prefabricated structure that could be largely manufactured off-site. The main design intent being, should it ever be required, it would be possible to take the built structure apart and cart it away, leaving the environment exactly as it was found.







SHAPES ARE BOLD AND GUTSY WITH SOFT ROUNDED EDGES



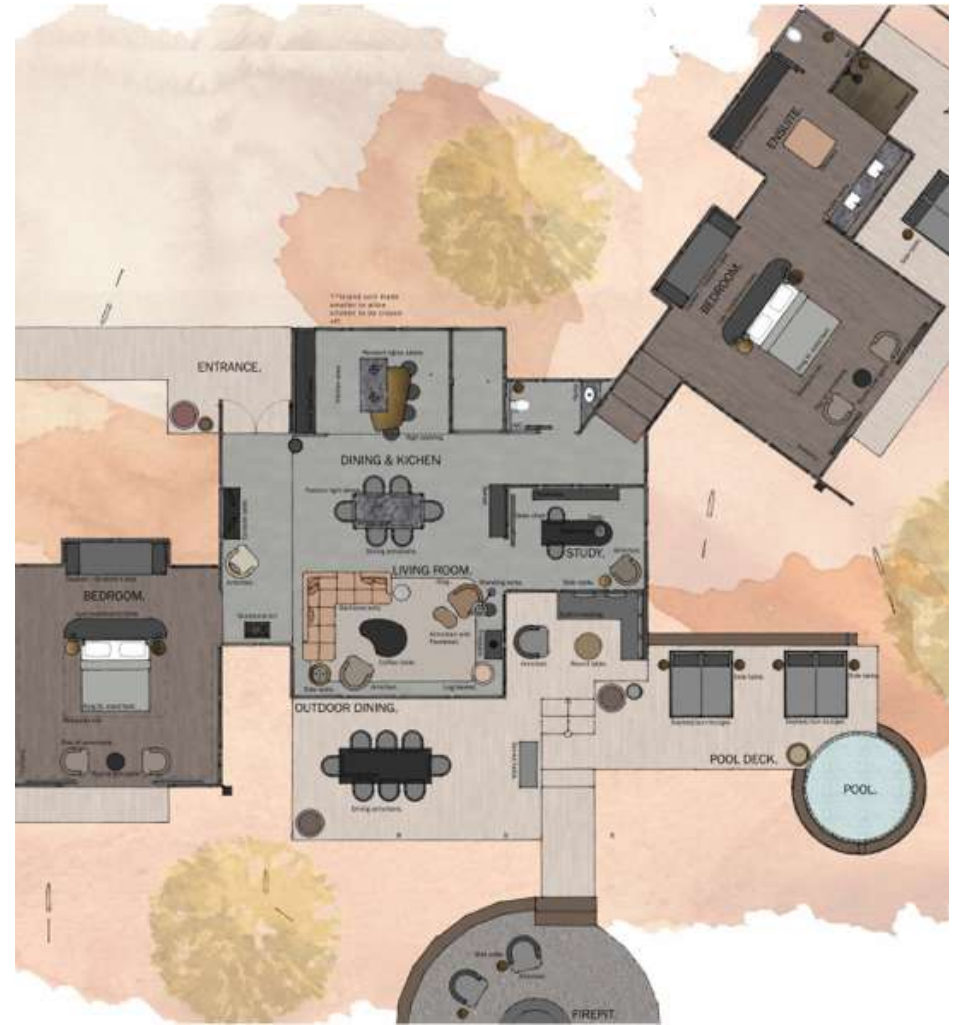


















BOOK SIX NIGHTS AND ONLY PAY FOR 5

Enjoy the best of Tswalu and explore the destination with an incredible 6-night itinerary that includes 3 nights at the Motse followed by 3 nights at Loapi.

With this first-ever dual camp offer from Tswalu, we are also including complimentary return flights to Tswalu from Johannesburg or Cape Town with Fireblade Aviation.





## OUR 2022 IMPACT

By staying with us in 2022, our guests helped conserve 114,000 hectares and impact the lives of 282 staff members and their families. In addition, nature-based tourism helped us provide essential health care to 5711 patients through the health care centre, a community service that is provided free of charge to anyone living within a 100-kilometre radius of the reserve. In total, Tswalu invested US\$ 5,136 million in nature and people in 2022



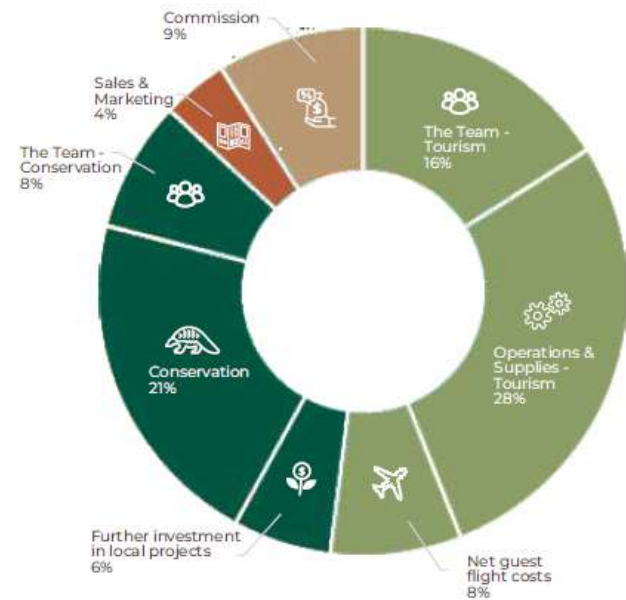


# HOW YOUR STAY IMPACTS NATURE AND PEOPLE

## OUR 4C IMPACT STATEMENT: JANUARY - DECEMBER 2022

We are a proud member of The Long Run, a global network of tourism businesses committed to conserving ecosystems and improving the well-being of people through a holistic balance of the 4Cs — Conservation, Community, Culture, and Commerce. The Long Run is hosted by Preferred by Nature, a non-profit organisation working in 100+ countries to support better land management and business practices that benefit people, nature, and the climate.

### YOUR CONTRIBUTION TO THE LOCAL ECONOMY



42%	56%	3%
Local	National	Other

### OUR INVESTMENT IN 4C PROJECTS EXPLAINED

77%	<p>Conservation, biodiversity and habitat restoration, reserve management and anti-poaching, in South Africa's largest privately protected reserve.</p>
21%	<p>On-site health care centre, providing a free community service to 5711 patients within a 100km radius.</p>
2%	<p>Donations to the Tswalu Foundation enabled 22 research projects in 2022, including studies of reptiles, butterfly migration, tree chronology, and the North of Kuruman paleoarchaeology project.</p>

### BY STAYING WITH US YOU HELP

<p>CONSERVATION</p>	<p>Conserve 114,000ha including nearly 500 species of mammals, birds, butterflies, and reptiles. Fund 22 research projects through the Tswalu Foundation.</p>
<p>COMMUNITY</p>	<p>Impact the lives of 282 staff and their families, and 5711 patients in the greater community, via our health care centre.</p>
<p>CULTURE</p>	<p>Support 3 Artists in Residence, through the Tswalu Foundation, and a major archaeological project.</p>
<p>COMMERCE</p>	<p>Invest US\$ 5,136,000 in nature and people in 2022.</p>



Method vetted by The Long Run for January-December 2022. For more details about the framework used to make these calculations, please go to [thelongrun.org/4CImpactStatement](https://thelongrun.org/4CImpactStatement).

