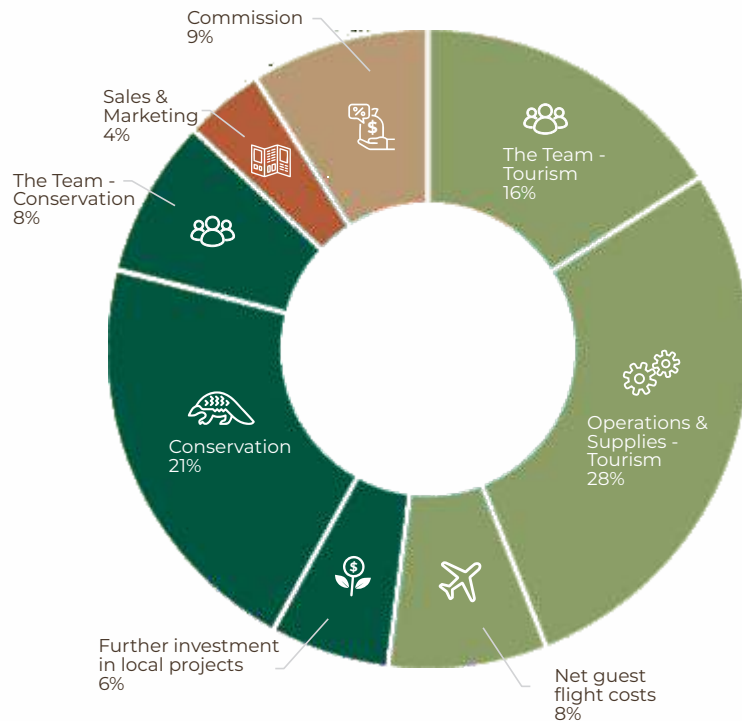


# HOW YOUR STAY IMPACTS NATURE AND PEOPLE

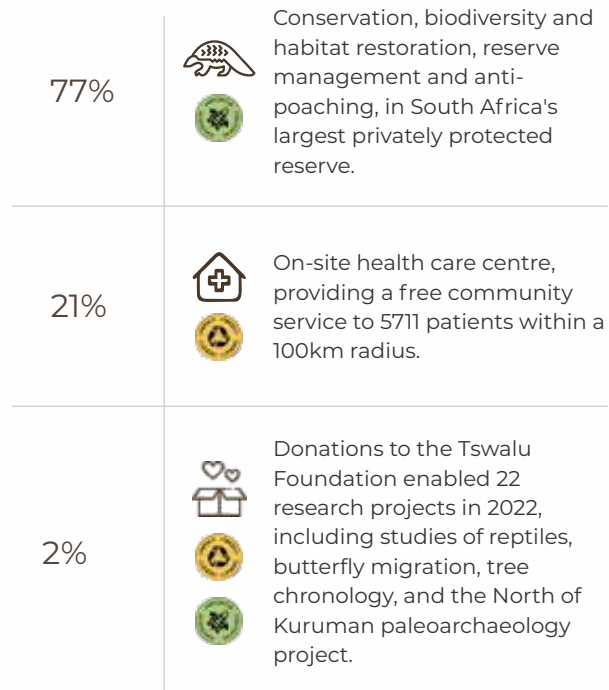
## OUR 4C IMPACT STATEMENT: JANUARY - DECEMBER 2022

We are a proud member of The Long Run, a global network of tourism businesses committed to conserving ecosystems and improving the well-being of people through a holistic balance of the 4Cs — Conservation, Community, Culture, and Commerce. The Long Run is hosted by Preferred by Nature, a non-profit organisation working in 100+ countries to support better land management and business practices that benefit people, nature, and the climate.

### YOUR CONTRIBUTION TO THE LOCAL ECONOMY



### OUR INVESTMENT IN 4C PROJECTS EXPLAINED



### BY STAYING WITH US YOU HELP

<p>CONSERVATION</p>	<p>Conserve 114,000ha including nearly 500 species of mammals, birds, butterflies, and reptiles. Fund 22 research projects through the Tswalu Foundation.</p>
<p>COMMUNITY</p>	<p>Impact the lives of 282 staff and their families, and 5711 patients in the greater community, via our health care centre.</p>
<p>CULTURE</p>	<p>Support 3 Artists in Residence, through the Tswalu Foundation, and a major archaeological project.</p>
<p>COMMERCE</p>	<p>Invest US\$ 5,136,000 in nature and people in 2022.</p>

42%	56%	3%
Local	National	Other



Method vetted by The Long Run for January-December 2022. For more details about the framework used to make these calculations, please go to [thelongrun.org/4CsImpactStatement](https://thelongrun.org/4CsImpactStatement).



**TSWALU**